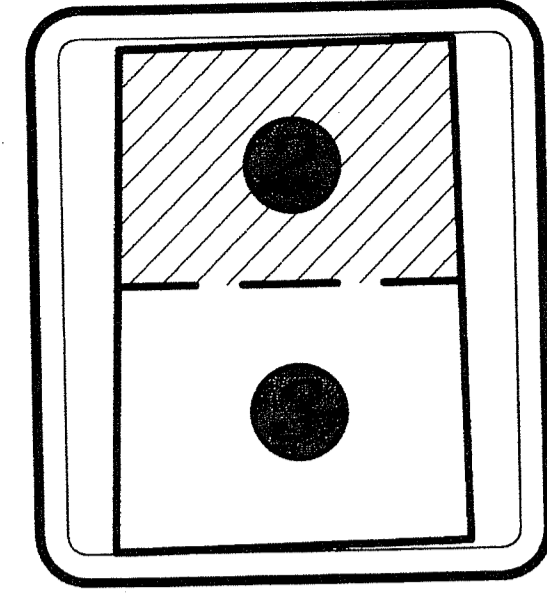


# LAKE WORTH SENIOR LIVING

BEING A REPLAT OF TRACT 24, BLOCK 34, PALM BEACH FARMS COMPANY PLAT NO. 3, RECORDED IN PLAT BOOK 2, PAGES 45 THROUGH 54, OF THE PALM BEACH COUNTY PUBLIC RECORDS, SAID LANDS LYING AND SITUATE IN SECTION 31, TOWNSHIP 44 SOUTH, RANGE 42 EAST, PALM BEACH COUNTY, FLORIDA.

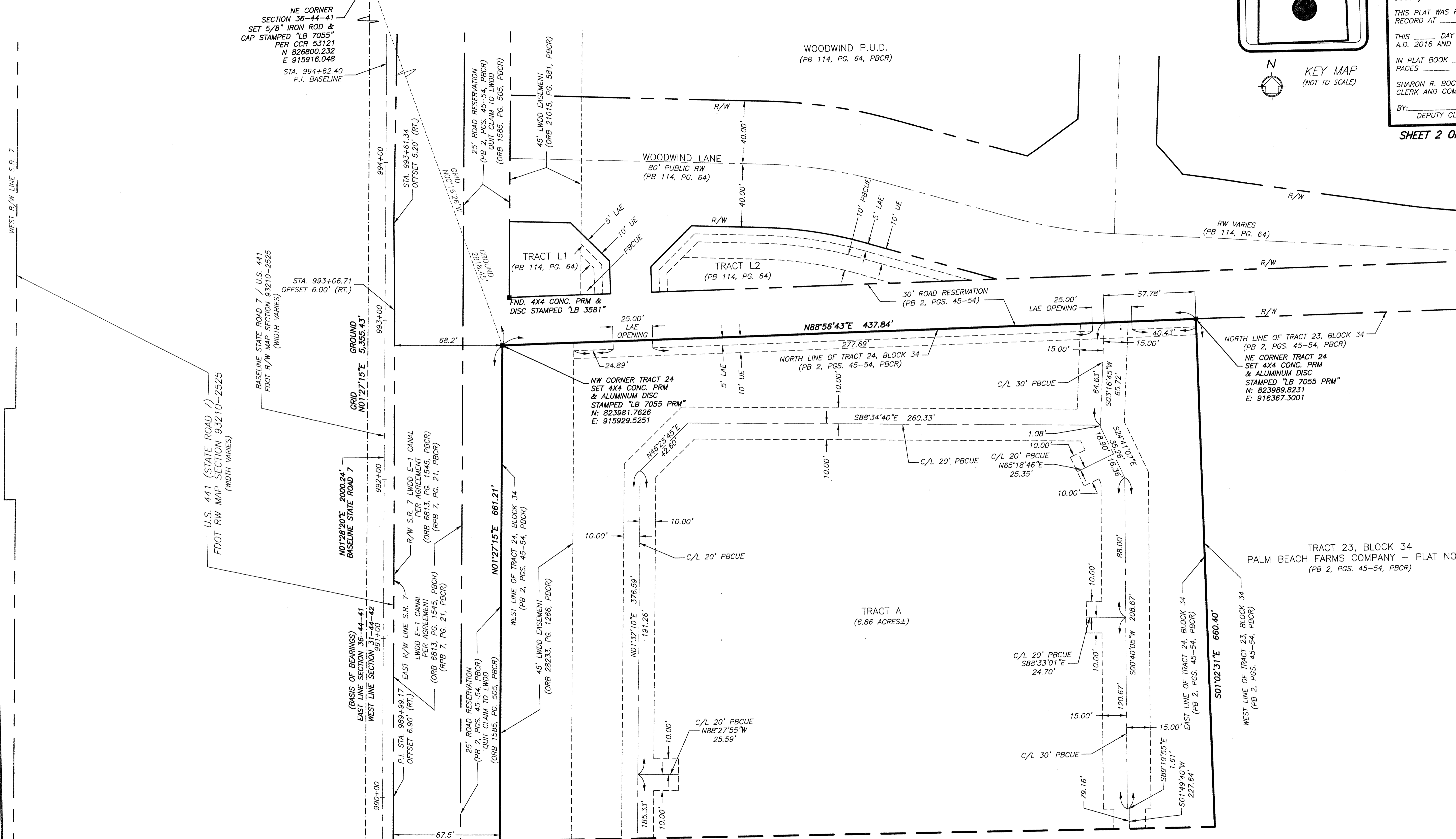


121

State of Florida }  
County of Palm Beach } SS

THIS PLAT WAS FILED FOR RECORD AT \_\_\_\_\_ M.  
THIS \_\_\_\_\_ DAY OF \_\_\_\_\_  
A.D. 2016 AND DULY RECORDED  
IN PLAT BOOK \_\_\_\_\_ ON  
PAGES \_\_\_\_\_ THROUGH \_\_\_\_\_  
SHARON R. BOCK  
CLERK AND COMPTROLLER  
BY: \_\_\_\_\_  
DEPUTY CLERK

**SHEET 2 OF 3 SHEETS**



NE CORNER  
SECTION 36-44-41  
SET 5/8" IRON ROD &  
CAP STAMPED "LB 7055"  
PER CCR 53121  
N 828800.232  
E 915916.048  
STA. 994+62.40  
P.I. BASELINE

BASELINE STATE ROAD 7 / U.S. 441  
FDOT R/W MAP SECTION 93210-2525  
(WIDTH VARIES)

STA. 993+06.71  
OFFSET 6.00' (RT.)

GROUND  
GRID  
N01°27'15"E  
5,355.43'

U.S. 441 (STATE ROAD 7)  
FDOT R/W MAP SECTION 93210-2525  
(WIDTH VARIES)

N01°29'20"E 2000.24'  
BASELINE STATE ROAD 7

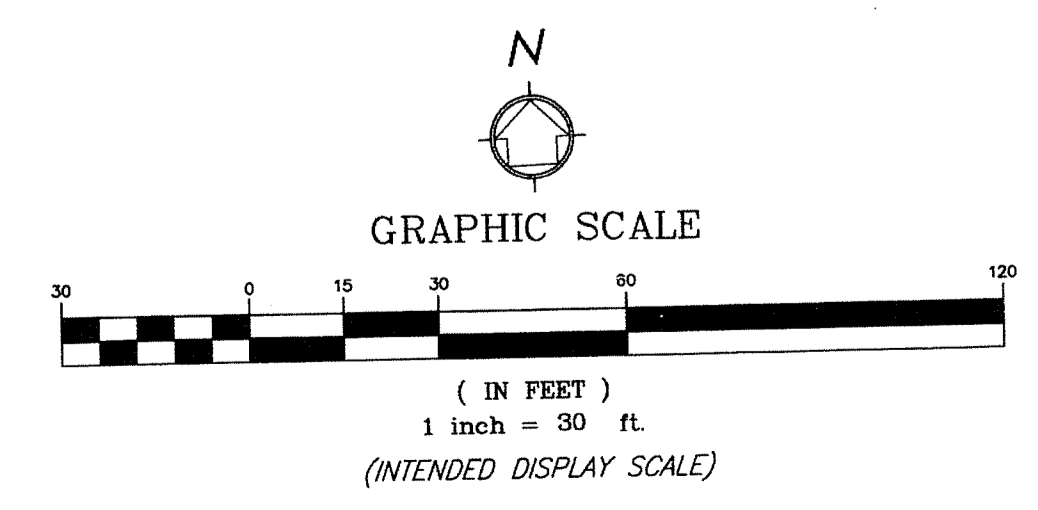
(BASIS OF BEARINGS)  
EAST LINE SECTION 36-44-41  
WEST LINE SECTION 31-44-42

P.I. STA. 989+99.17  
OFFSET 6.90' (RT.)

R/W S.R. 7 LWDD E-1 CANAL  
PER AGREEMENT  
(ORB 6813, PG. 1545, PBCR)  
(RFB 7, PG. 21, PBCR)

SE CORNER  
SECTION 36-44-41  
SET NAIL & DISC  
STAMPED "LB 7055"  
PER CCR 53123  
N 821446.423  
E 915780.132

- LEGEND:**
- |       |  |       |                                      |
|-------|--|-------|--------------------------------------|
| AC    | = ACRES                                | PG.   | = PAGE                               |
| C/L   | = CENTERLINE                           | PBCUE | = PALM BEACH COUNTY UTILITY EASEMENT |
| CCR   | = CERTIFIED CORNER RECORD              | PBCR  | = PALM BEACH COUNTY RECORDS          |
| CONC. | = CONCRETE                             | PB    | = PLAT BOOK                          |
| DB    | = DEED BOOK                            | P.I.  | = POINT OF INTERSECTION              |
| FDOT  | = FLORIDA DEPARTMENT OF TRANSPORTATION | PRM   | = PERMANENT REFERENCE MONUMENT       |
| FND.  | = FOUND                                | RFB   | = ROAD PLAT BOOK                     |
| LAE   | = LIMITED ACCESS EASEMENT              | R/W   | = RIGHT-OF-WAY                       |
| LWDD  | = LAKE WORTH DRAINAGE DISTRICT         | STA.  | = STATION                            |
| LB    | = LICENSED BUSINESS                    | S.R.  | = STATE ROAD                         |
| NAD   | = NORTH AMERICAN DATUM                 | UE    | = UTILITY EASEMENT                   |
| ORB   | = OFFICIAL RECORDS BOOK                | U.S.  | = UNITED STATES                      |



**WGI**  
Wantman Group, Inc.

Engineering ♦ Planning ♦ Surveying ♦ Environmental

2035 VISTA PARKWAY, SUITE 100, WEST PALM BEACH, FL 33411  
(866) 909-2220 phone (561) 687-1110 fax  
CERTIFICATE OF AUTHORIZATION No. LB 7055  
ORLANDO - PORT ST. LUCIE - TAMPA

THIS INSTRUMENT WAS PREPARED BY PATRICK MEEDS, P.S.M.  
PROFESSIONAL SURVEYOR AND MAPPER, LICENSE NO. 4728  
FOR THE FIRM: WANTMAN GROUP, INC.